

HikCentral-Workstation/32

HikCentral-Workstation/32 is an integrated security software designed to meet versatile security challenges in one intuitive platform: from managing individual systems such as video security, access control, intrusion alarm, etc., to collaborating multiple systems under a unified architecture. While protecting people and property, it makes daily operations more efficient, and helps various kinds of users make smarter decisions.



Key Feature

Home Page

- Providing two predefined Home page modes on Web Client, including system installation and management mode, security control and management mode
- Supports customizing Home page mode on Web Client
- Supports customizing control panel on Control Client
- Supports switching Home page mode for visualization and non-visualization management
- Providing different report dashboards for resource status, access records, vacant parking spaces, alarms, etc., on the Home page of Web Client

Wizard

- Providing wizards for video management, access control, vehicle management, alarm detection on Web Client

Live View and Playback

- Up to 256 channels live view simultaneously
- Custom window division configurable
- Viewing maps and real-time events during live view and playback
- Stream type self-adaptive, transcoded playback, and frame- extracting playback
- Fisheye dewarping of multi-channel
- Controlling PTZ in visualization way
- Supports decoding stream from cameras with high-definition, such as PanoVu series camera

Visual Tracking

Recording and Storage

- Recording schedule for continuous recording, event recording and command recording
- Storing videos on encoding devices, Hybrid SANs, cloud storage servers
- Providing main storage and auxiliary storage
- Providing video copy-back
- Storing alarm pictures on NVRs, Hybrid SANs, cloud storage servers, HikCentral server
- Supports search of VCA event related videos, video footages, and event triggered video footages.

Event Management

- Camera linkage, alarm pop-up window and multiple linkage actions
- Multiple events for video security, access control, resource group, resource maintenance, etc.
- Supports adding combined alarms in a visualization way
-



Access Control and Video Intercom

- Setting schedules for free access status and access forbidden status of doors
- Supports multiple access modes for both card reader authentication and person authentication
- Supports assigning an access level to persons, assigning access levels to persons, assigning access levels to person groups, and assigning access levels to an access group
- Supports advanced functions such as multi-factor authentication, anti-passback, and multi-door interlocking
- Controlling door status in real-time
- Calling indoor station by the Control Client
- Calling the platform by door station and indoor station, and answering the call by the Control Client

Security Control

- Real-time alarm management for added security control panels
- Adding zone as hot spot on E-map and viewing the video of the linked camera
- Event and alarm linkage with added cameras, including pop-up live view, captured picture
- Subscribing the events that the Control Client can display in real-time
- Acknowledging the received alarm on the Control Client

Entrance and Exit Control

- Managing parking lot, entrances and exits, and lanes.
- Supports linking a LED screen with lane for information display
- Setting entry & exit rules for vehicles in the vehicle lists as well as vehicles not in any vehicle lists
- Entrance and exit control based on license plate recognition, card, or video intercom
- Viewing real-time and history vehicle information and controlling barrier gate manually on the Control Client

Temperature Screening

- Displaying the skin-temperature and whether wearing a mask or not about the recognized persons in real time
- Triggering events and alarms when detects abnormal temperature and no mask worn
- Viewing reports about skin-surface temperature and mask-wearing

Face and Body Recognition

- Displaying the information of the recognized persons in real-time
- Searching history records of recognized persons, including searching in captured pictures, searching matched persons, searching by features of persons, and searching frequently appeared persons

Network Management

- Managing network transmission devices such as switches, displaying the network connection and hierarchical relationship of the managed resources by a topology
- Viewing the network details between the device nodes in the topology, such as downstream and upstream rate, port information, etc. and checking the connection path
- Exporting the topology and abnormal data to check the device connection status and health status

Software Specification

| Features | | Maximum Performance |
|-----------------------|---|---------------------|
| Devices and Resources | Cameras <i>*Including ANPR Cameras and Cameras with Face Capture Function</i> | 32 |
| | Managed Device IP Addresses <i>*Including Encoding Devices, Access Control Devices, Security Control Devices, and Remote Sites</i> | 128 |
| | Video Intercom Devices <i>*Including Indoor Station</i> | 8 |
| | Alarm Inputs (Including Zones of Security Control Devices) | 32 |
| | Alarm Outputs | 32 |
| | Alarm Inputs of Security Control Devices | 32 |
| | ANPR Cameras | 4 |
| | Cameras with Face Capture Function | 2 |
| | Security Radars | 2 |
| | Areas | 64 |
| | Cameras per Area | 32 |
| | Alarm Inputs per Area | 16 |
| | Alarm Outputs per Area | 16 |
| Recording | Recording Schedule | 64 |
| | Recording Schedule Template | 32 |
| Event & Alarm | Event and Alarm Rules | 128 |
| | Storage of Events or Alarms without Pictures | 5/s |
| | Events or Alarms Sent to Clients <i>*The clients include Control Clients and Mobile Clients.</i> | 5/s 8 Clients/s |
| | Notification Schedule Templates | 100 |
| Picture | Picture Storage <i>*Including event/alarm pictures, face pictures, and vehicle pictures.</i> | 5/s |
| Reports | Regular Report Rules | 64 |
| | Event or Alarm Rules in One Event/Alarm Report Rule | 32 |
| | Records in One Sent Report | 10,000 or 10 MB |
| | Resources Selected in One Report <i>*With this limitation, you can generate a neat and clear report via the Control Client and it costs less time.</i> | 20 |
| Data Storage | Data Retention Period | Stored for 6 Months |
| Users and Roles | Concurrent Accesses via Web Clients and Control Clients | 8 |
| | Concurrent Accesses via Mobile Clients | 8 |
| | Users | 8 |
| | Roles | 8 |
| Vehicle (ANPR) | Vehicle Lists | 50 |
| | Vehicles per Vehicle List | 500 |
| Entrance & Exit | Lanes | 4 |
| | Cards Linked with Vehicles | 2,500 |
| | Vehicle Passing Frequency in Each Lane | 1 Vehicle/s |
| Face Comparison | Persons with Profiles for Face Comparison | 10,000 |
| | Face Comparison Groups | 16 |
| | Persons in One Face Comparison Group | 1,000 |
| Access Control | Persons with Credentials for Access Control | 3,000 |
| | Total Credentials (Card + Fingerprint) | 15,000 |
| | Cards | 15,000 |
| | Fingerprints | 12,000 |
| | Profiles | 3,000 |

| | | |
|--|---------------------------------------|-------|
| | Access Points (Doors+Outdoor Station) | 8 |
| | Access Groups | 32 |
| | Persons in One Access Group | 3,000 |
| | Access Levels | 16 |
| | Access Schedules | 32 |

Decoding Performance of Control Client

| Resolution | Video Encoding Type | Maximum Hardware Decoding Channels | Maximum Software Decoding Channels |
|------------------------------|---------------------|------------------------------------|------------------------------------|
| 4CIF (704*576) | H.264 | 40 | 44 |
| | H.265 | 64 | 40 |
| 1920 × 1080 | H.264 | 6 | 5 |
| | H.265 | 6 | 4 |
| 2560 × 1440 | H.264 | 3 | 2 |
| | H.265 | 3 | 2 |
| 3840 × 2160 | H.264 | 1 | 1 |
| | H.265 | 1 | 1 |
| 2560 × 2560 (Fisheye Camera) | H.264 | 2 | 2 |
| | H.265 | 2 | 2 |
| 4000 × 4000 (Fisheye Camera) | H.264 | 1 | 1 |
| | H.265 | 2 | 1 |

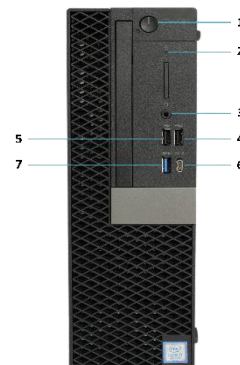
Hardware Specification



| | |
|-------------------------------|--|
| Processor | Intel® Core™ i3-8100 (4Cores/6MB/4T/ 3.6GHz/65W); |
| Operating Systems | Microsoft® Windows 10 IoT Ent (64-bit) |
| Memory | 2 × 4GB 2666MHz DDR4 UDIMM |
| Graphics Card | Integrated Intel® HD Graphics 630 |
| Storage | M.2 256GB SATA Class 20 solid state drive |
| NIC | Integrated Intel I219-LM Ethernet LAN 10/100/1000 |
| I/O Ports | 10 External USB: 1 × USB Type-C 3.1 Gen 2, 5 × 3.1 Gen 1 Type-A (1 Front, 4 Rear), 4 × USB 2.0, 1 × RJ-45, 2 × Displayport, 1 × Serial, 2 × PS/2 |
| Form Factor | Small Form Factor |
| Power Supply | 300W typical 90% Efficient PSU (80 PLUS Bronze) |
| Dimensions (H × W × D) | 29cm × 9.26cm × 29.2cm (11.42" × 3.7" × 11.5") |
| Weight | 7.57lbs / 5.26kg |
| Certification | CE, FCC, UL |
| Warranty | 36 Months |

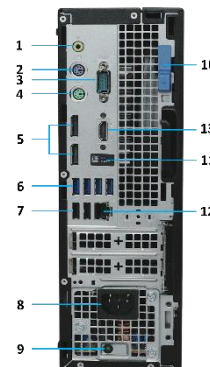
Front View

- 1- Power Button and Power Light
- 2- Hard Drive Activity Light
- 3- Headset/Universal Audio Jack Port
- 4- USB 2.0 Port with PowerShare
- 5- USB 2.0 Port
- 6- USB 3.1 Gen 2 Port with PowerShare
- 7- USB 3.1 Gen 1 Port



Back View

- 1- Line-Out Port
- 2- PS/2 Keyboard Port
- 3- Serial Port
- 4- PS/2 Mouse Port
- 5- Display Ports
- 6- USB 3.1 Gen 1 Ports
- 7- USB 2.0 Ports (Supports SmartPower On)
- 8- Power Connector Port
- 9- Power Supply Diagnostic Light
- 10- Release Latch
- 11- Service Tag Label
- 12- Network Port
- 13- HDMI Port



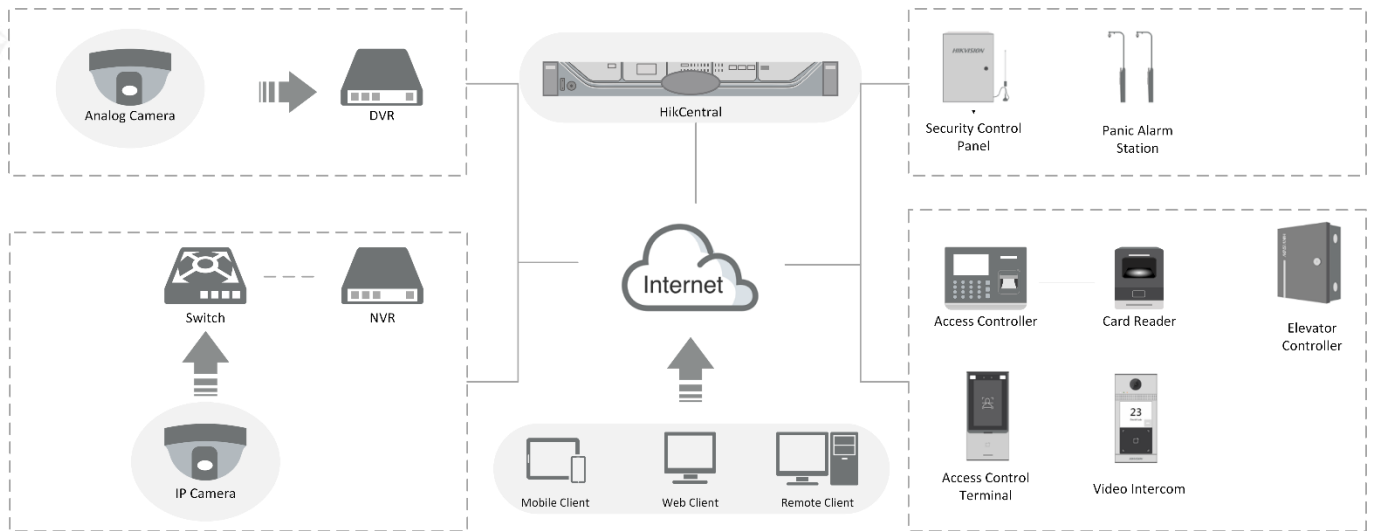
Note: By default, the DP to VGA adapter will be provided.

System Requirement

* For high stability and good performance, the following system requirements must be met.

| Feature | Description |
|------------------------------|--|
| OS for Control Client | Microsoft® Windows 7 SP1 (32/64-bit) Microsoft® Windows 8.1 (32/64-bit) Microsoft® Windows 10 (64-bit) Microsoft® Windows Server 2008 R2 SP1 (64-bit) Microsoft® Windows Server 2012 (64-bit) Microsoft® Windows Server 2012 R2 (64-bit) Microsoft® Windows Server 2016 (64-bit) Microsoft® Windows Server 2019 (64-bit) <i>*For Windows 8.1 and Windows Server 2012 R2, make sure it is installed with the rollup (KB2919355) updated in April, 2014.</i> |
| Browser Version | Internet Explorer 10/11 and above Chrome 61 and above Firefox 57 and above Safari 11 and above (running on Mac OS X 10.3/10.4) |
| Database | PostgreSQL V9.6.13 |
| OS for Smartphone | iOS 10.0 and later Android phone OS version 5.0 or later, and dual-core CPU with 1.5 GHz or above, and at least 2G RAM |
| OS for Tablet | iOS 10.0 and later Android tablet with Android OS version 5.0 and later |

Typical Application



Distributed by

**HIKVISION®****Headquarters**

No.555 Qianmo Road, Binjiang District,
Hangzhou 310051, China
T +86-571-8807-5998
overseasbusiness@hikvision.com

Hikvision USA
T +1-909-895-0400
sales.usa@hikvision.com

Hikvision Australia
T +61-2-8599-4233
salesau@hikvision.com

Hikvision India
T +91-22-28469900
sales@pramahikvision.com

Hikvision Canada
T +1-866-200-6690
sales.canada@hikvision.com

Hikvision Thailand
T +662-275-9949
sales.thailand@hikvision.com

Hikvision Europe
T +31-23-5542770
sales.eu@hikvision.com

Hikvision Italy
T +39-0438-6902
info.it@hikvision.com

Hikvision Brazil
T +55 11 3318-0050
Latam.support@hikvision.com

Hikvision Turkey
T +90 (216)521 7070- 7074
sales.tr@hikvision.com

Hikvision Malaysia
T +601-7652-2413
sales.my@hikvision.com

Hikvision UK & Ireland
T +01628-902140
sales.uk@hikvision.com

Hikvision South Africa
Tel: +27 (10) 0351172
sale.africa@hikvision.com

Hikvision France
T +33(0)1-85-330-450
info.fr@hikvision.com

Hikvision Kazakhstan
T +7-727-9730667
nikia.panfilov@hikvision.ru

Hikvision Vietnam
T +84-974270888
sales.vt@hikvision.com

Hikvision UAE
T +971-4-4432090
salesme@hikvision.com

Hikvision Singapore
T +65-6684-4718
sg@hikvision.com

Hikvision Spain
T +34-91-737-16-55
info.es@hikvision.com

Hikvision Tashkent
T +99-87-1238-9438
uzb@hikvision.ru

Hikvision Hong Kong
T +852-2151-1761
info.hk@hikvision.com

Hikvision Russia
T +7-495-669-67-99
sateru@hikvision.com

Hikvision Korea
T +82-(0)31-731-8817
sales.korea@hikvision.com

Hikvision Poland
T +48-22-460-01-50
info.pl@hikvision.com

Hikvision Indonesia
T +62-21-2933759
Sales.Indonesia@hikvision.com

Hikvision Colombia
sales.colombia@hikvision.com