

## Putting a call on hold

1. Press **Hold** key or Hold soft key, caller is put on hold.
2. To retrieve the call press **Resume** key or Resume soft key.
3. **Note:** with more than one active call, select desired call with the **Call** navigator keys and use the corresponding soft key to hold or resume.

## Call transfer

### Attended transfer:

1. Press **Xfer** key or Xfer soft key during the active conversation, the call is put on hold.
2. Dial the second telephone number.
3. When the call is answered, then press **Xfer** key or Xfer soft key to complete the operation.

### Blind transfer:

1. Press **Xfer** key or Xfer soft key during the active conversation, the call will be on hold.
2. Then enter the 2nd telephone number and press **Xfer** key or Xfer soft key.

## Call forward

1. Press Menu > Features > Call Forward.
2. Select the line, the type of forward, enter the destination number and status and OK.

## 3-party conference

1. Once in line with 1st caller, press **Conf** key or Conf soft key, 1st caller is put on hold.
2. Then call the 2nd number.
3. After, 2nd call is established, press **Conf** key or Conf soft key to set up the conference.

## Programmable keys

1. You can configure shortcuts for the programmable keys.
2. Press Menu > Basic > Keyboard, select among the configurable items, and select your desired type and value, press OK key.

## Do not disturb

1. Press DND soft key, and enable the device do not disturb mode.
2. Or press Menu > Features > DND, and select the Mode and Type, and press Save soft key.

## Voice mail

1. To access your voice mailbox, press **Message** or Menu > Message > Voice Message, number of messages will be indicated if provided by your server or pbx.
2. Select the line and press Play to call.

## Bluetooth

1. Plug the Wi-Fi Dongle. Press Menu > Basic > Bluetooth.
2. Press OK soft key to enter the bluetooth open interface. After opening, press Scan soft key to display the list of bluetooth scanned. Select any device and press connect.

## WiFi

1. Plug the Wi-Fi Dongle. Press Menu > Basic > WLAN.
2. Press OK soft key to enter the WLAN open interface. After opening, press Scan soft key to display the list of Wi-Fi scanned.
3. Press Enter soft key to enter the available Network, select the wireless network, press the Connect soft key and enter the password to connect.

## Call list

1. Press **CallLog** key or Menu > CallLog > Local Call Logs.
2. Scroll through the list using **Call** navigator keys.
3. To dial an entry, press Dial soft key or pickup handset or press **Call** or **Call** .

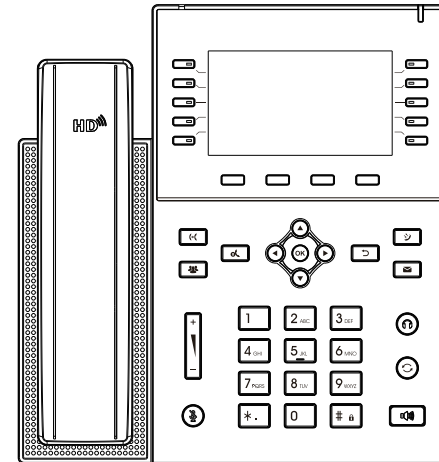
## Phonebook

### Access phonebook:

1. Press Contact soft key or Menu > PhoneBook > Local Contacts.
2. Select All Contacts or other group.
3. To dial an entry, press Dial soft key or pickup handset or press **Call** or **Call** .

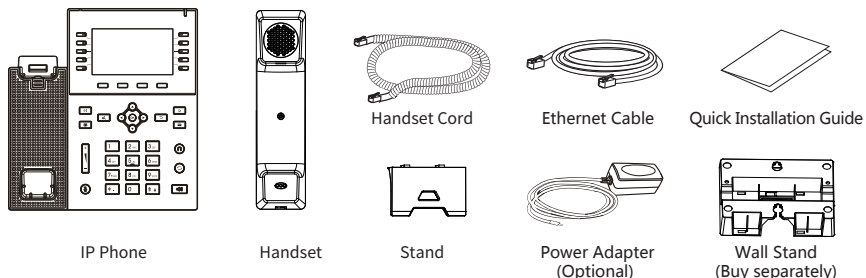
### Add new entry:

1. Press Contact soft key, Press All Contacts or other group > Press Add.
2. Enter name and number and press OK soft key.

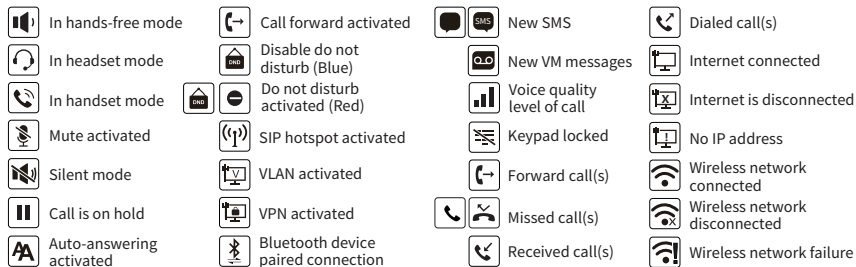


# IP Phone Quick Installation Guide

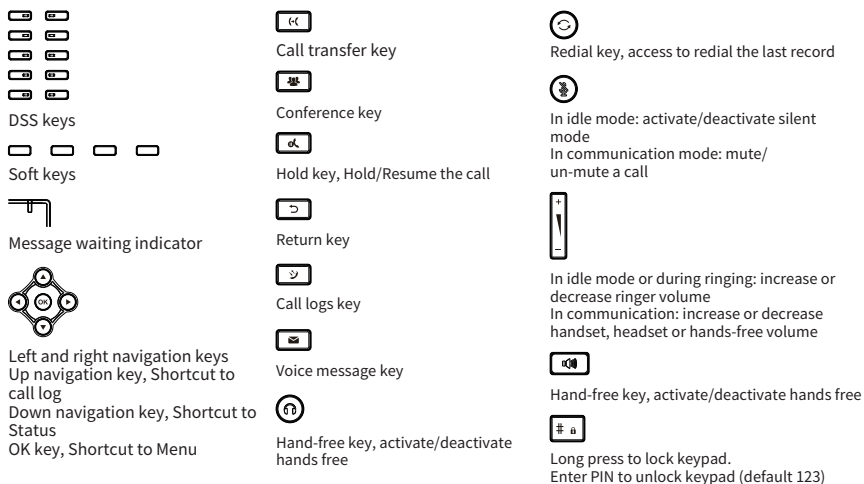
## Packaging list



## Screen icon



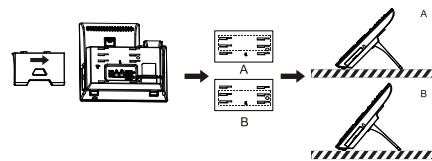
## Keys features



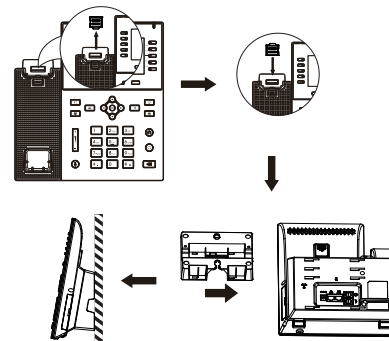
## Installation the device

Please follow the instructions in below picture to install the device.

### • Bracket desktop installation



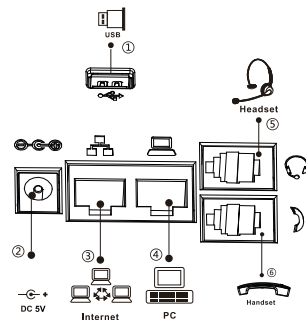
### • Wall mounting (wall stand need buy separately)



### Connecting to the device

Please connect power adapter, network, PC, handset, and headset to the corresponding ports as described in below picture.

- ① USB port: connect USB device (USB flash disk, WiFi dongle, BT dongle)
- ② Power port: connect the power adapter.
- ③ Network port: connecting local area network or internet.
- ④ PC port: the network port connect to the computer.
- ⑤ Headset port: connect headset.
- ⑥ Handset port: connect IP Phone handset.



## Configuration

### Configuration via phone

1. Press Menu > Advanced (default password 123).
2. Select Network: To configure the Network Settings (IPv4/IPv6/IPv4&IPv6, DHCP/Static/PPPoE).
3. Select Accounts: To configure enable the account, fill the SIP server address, port, user name, password etc.
4. Save the configuration.

### Configuration via web

1. Get the IP address from the phone: Press key, or Menu > Status > IPv4 / IPv6.
2. Login: Input the IP address in the web browser. The PC and phone should be in the same IP addressment (The default username and password are both 'admin' .)
3. Configure: Select network/account etc, and fill the relevant content.
4. Save the configuration.

## Language setting

1. Press Menu key > Basic > Language.
2. Select the desired language and press OK soft key.

## Making a call

1. **Pre-dialing:** enter the phone number and pick up the handset.
2. **Direct dialing:** lift the handset and enter the phone number.
3. **Handsfree:** enter phone number and press or vice versa.
4. **Headset:** enter phone number and press or vice versa.
5. **Designated line:** press line key, enter phone number and press dial key.

## Accepting a call

1. **Using the handset:** pick up the handset.
2. **Using the headset:** press .
3. **Using the hands-free:** press .

## Redial

1. Press , redial a call number.

## Call Mute

1. Press to Mute the microphone during the call.
2. Press again to un-mute the conversation.