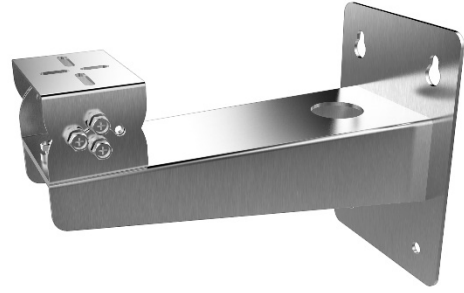


## DS-1704ZJ

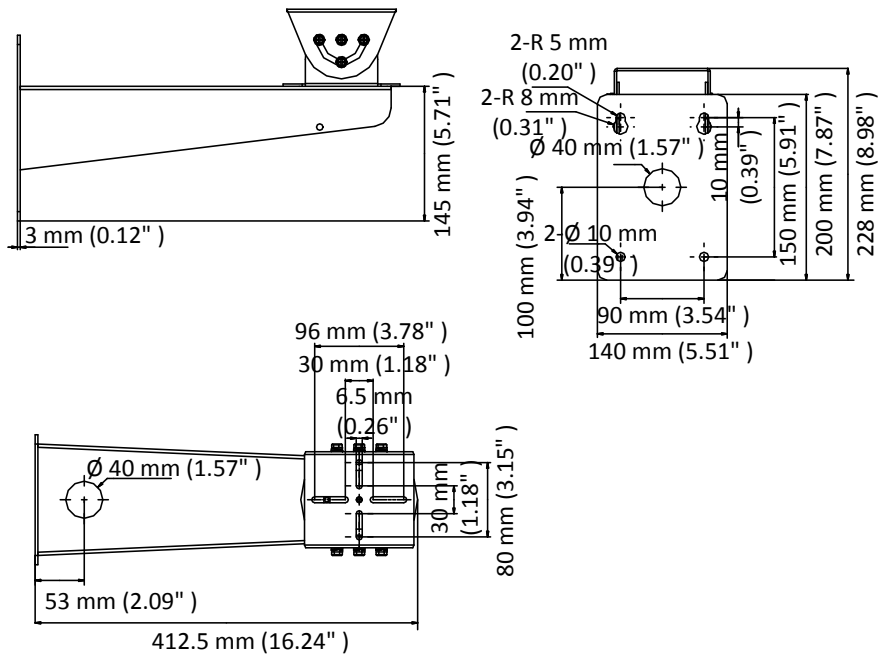
Wall Mount for Explosion-Proof Bullet Camera



### Feature

- Stainless steel
- Adjustable tilt angle from -45° to 45°, and pan angle from -45° to 45°
- Cable hole design facilitates the cable routing

### Dimension



### Available Model

DS-1704ZJ

### Parameter

Model	DS-1704ZJ
Parameters	Wall Mount for Explosion-Proof Bullet Camera
Appearance	Natural Stainless Steel Color
Material	Stainless Steel
Dimension	412.5 mm × 140 mm × 228 mm (16.24" × 5.51" × 8.98" )
Weight	2160 g (4.76 lb.)

### Note

- The mount should be installed on the flat surface.
- The wall must be capable of supporting at least 8 times as much as the total weight of the camera, and the mount.
- The mount's maximum load capacity is 5 kg (11 lb.).